

Cambridge  
International  
**A Level**

**Cambridge International Examinations**  
Cambridge International Advanced Level

**MATHEMATICS**

**9709/73**

Paper 7 Probability & Statistics 2 (S2)

**May/June 2014**

**1 hour 15 minutes**

Additional Materials: Answer Booklet/Paper  
Graph Paper  
List of Formulae (MF9)

**READ THESE INSTRUCTIONS FIRST**

If you have been given an Answer Booklet, follow the instructions on the front cover of the Booklet.

Write your Centre number, candidate number and name on all the work you hand in.

Write in dark blue or black pen.

You may use an HB pencil for any diagrams or graphs.

Do not use staples, paper clips, glue or correction fluid.

DO **NOT** WRITE IN ANY BARCODES.

Answer **all** the questions.

Give non-exact numerical answers correct to 3 significant figures, or 1 decimal place in the case of angles in degrees, unless a different level of accuracy is specified in the question.

The use of an electronic calculator is expected, where appropriate.

You are reminded of the need for clear presentation in your answers.

At the end of the examination, fasten all your work securely together.

The number of marks is given in brackets [ ] at the end of each question or part question.

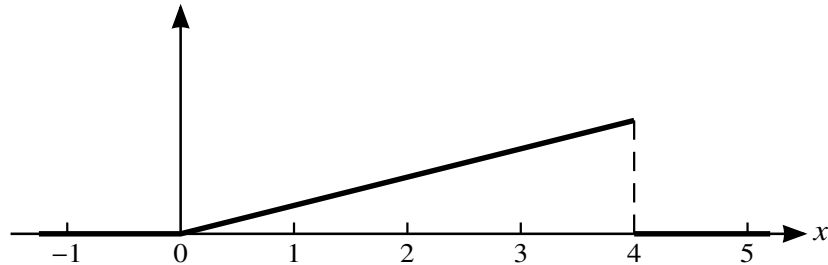
The total number of marks for this paper is 50.

Questions carrying smaller numbers of marks are printed earlier in the paper, and questions carrying larger numbers of marks later in the paper.

This document consists of **3** printed pages and **1** blank page.

- 1 On average 1 in 25 000 people have a rare blood condition. Use a suitable approximating distribution to find the probability that fewer than 2 people in a random sample of 100 000 have the condition. [3]

2



A random variable  $X$  takes values between 0 and 4 only and has probability density function as shown in the diagram. Calculate the median of  $X$ . [3]

- 3 A die is thrown 100 times and shows an odd number on 56 throws. Calculate an approximate 97% confidence interval for the probability that the die shows an odd number on one throw. [4]
- 4 The weights,  $X$  kilograms, of rabbits in a certain area have population mean  $\mu$  kg. A random sample of 100 rabbits from this area was taken and the weights are summarised by

$$\Sigma x = 165, \quad \Sigma x^2 = 276.25.$$

Test at the 5% significance level the null hypothesis  $H_0 : \mu = 1.6$  against the alternative hypothesis  $H_1 : \mu \neq 1.6$ . [6]

- 5 The lifetime,  $X$  years, of a certain type of battery has probability density function given by

$$f(x) = \begin{cases} \frac{k}{x^2} & 1 \leq x \leq a, \\ 0 & \text{otherwise,} \end{cases}$$

where  $k$  and  $a$  are positive constants.

- (i) State what the value of  $a$  represents in this context. [1]
- (ii) Show that  $k = \frac{a}{a-1}$ . [3]
- (iii) Experience has shown that the longest that any battery of this type lasts is 2.5 years. Find the mean lifetime of batteries of this type. [3]

- 6** A machine is designed to generate random digits between 1 and 5 inclusive. Each digit is supposed to appear with the same probability as the others, but Max claims that the digit 5 is appearing less often than it should. In order to test this claim the manufacturer uses the machine to generate 25 digits and finds that exactly 1 of these digits is a 5.
- (i) Carry out a test of Max's claim at the 2.5% significance level. [5]
  - (ii) Max carried out a similar hypothesis test by generating 1000 digits between 1 and 5 inclusive. The digit 5 appeared 180 times. Without carrying out the test, state the distribution that Max should use, including the values of any parameters. [2]
  - (iii) State what is meant by a Type II error in this context. [1]
- 7** A Lost Property office is open 7 days a week. It may be assumed that items are handed in to the office randomly, singly and independently.
- (i) State another condition for the number of items handed in to have a Poisson distribution. [1]
- It is now given that the number of items handed in per week has the distribution  $Po(4.0)$ .
- (ii) Find the probability that exactly 2 items are handed in on a particular day. [2]
  - (iii) Find the probability that at least 4 items are handed in during a 10-day period. [3]
  - (iv) Find the probability that, during a certain week, 5 items are handed in altogether, but no items are handed in on the first day of the week. [3]
- 8** In an examination, the marks in the theory paper and the marks in the practical paper are denoted by the random variables  $X$  and  $Y$  respectively, where  $X \sim N(57, 13)$  and  $Y \sim N(28, 5)$ . You may assume that each candidate's marks in the two papers are independent. The final score of each candidate is found by calculating  $X + 2.5Y$ . A candidate is chosen at random. Without using a continuity correction, find the probability that this candidate
- (i) has a final score that is greater than 140, [5]
  - (ii) obtains at least 20 more marks in the theory paper than in the practical paper. [5]

**BLANK PAGE**

---

Permission to reproduce items where third-party owned material protected by copyright is included has been sought and cleared where possible. Every reasonable effort has been made by the publisher (UCLES) to trace copyright holders, but if any items requiring clearance have unwittingly been included, the publisher will be pleased to make amends at the earliest possible opportunity.

Cambridge International Examinations is part of the Cambridge Assessment Group. Cambridge Assessment is the brand name of University of Cambridge Local Examinations Syndicate (UCLES), which is itself a department of the University of Cambridge.